

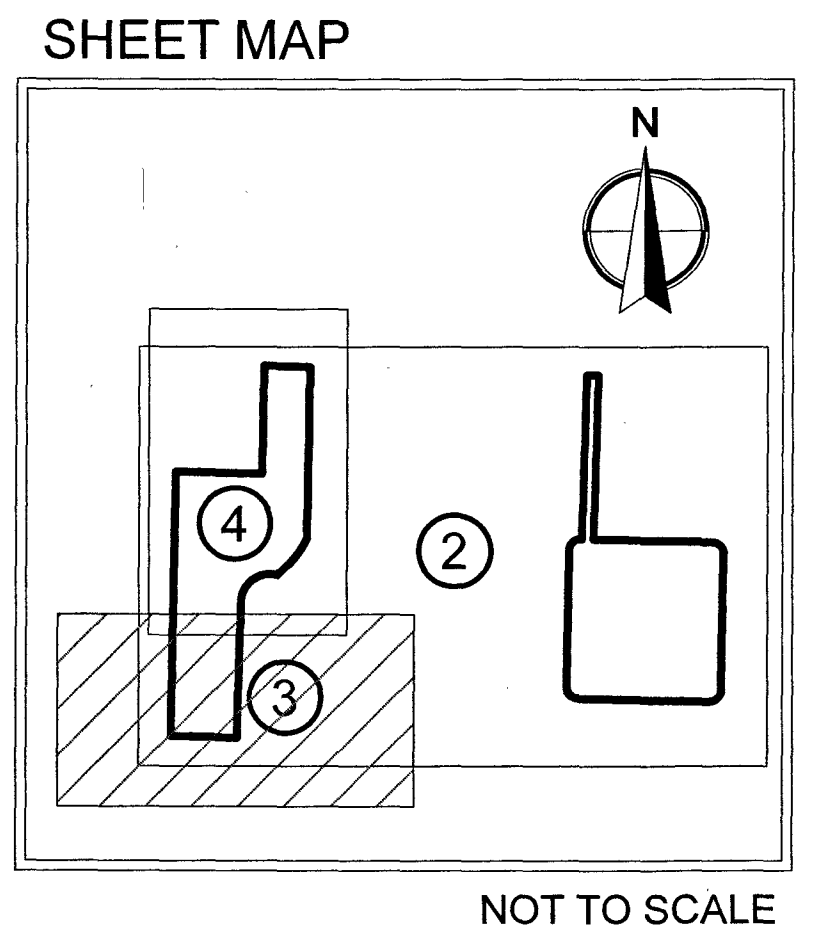
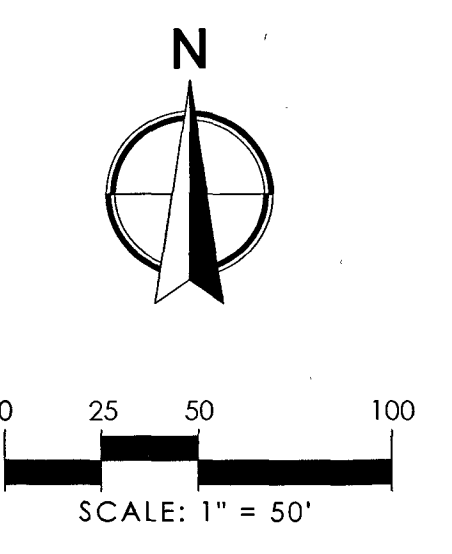
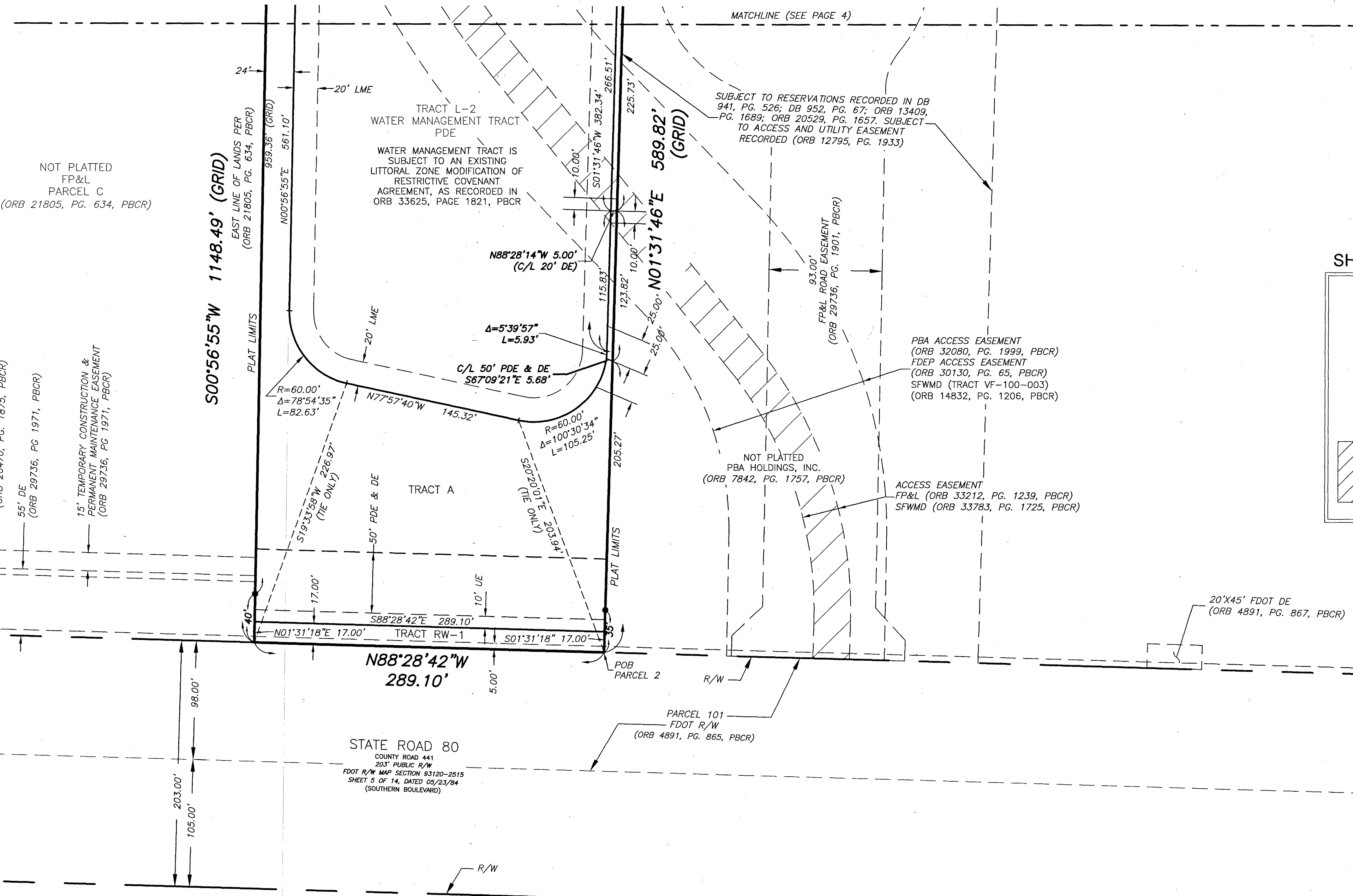
PBA HYDRO STORAGE WATER CONSERVATION & ENERGY CENTER

BEING A PORTION OF SECTIONS 32, TOWNSHIP 43S, RANGE 40E
PALM BEACH COUNTY, FLORIDA

114

LEGEND:

- CB = CHORD BEARING
- CD = CHORD DISTANCE
- C/L = CENTER LINE
- CCR = CERTIFIED CORNER RECORD
- CONC. = CONCRETE
- Δ = DELTA (CENTRAL ANGLE)
- DB = DEED BOOK
- DE = DRAINAGE EASEMENT
- E = EASTING
- FND. = FOUND
- FDOT = FLORIDA DEPARTMENT OF TRANSPORTATION
- FP&L = FLORIDA POWER & LIGHT
- GND = GROUND
- L = LENGTH OF ARC
- LMAE = LAKE MAINTENANCE ACCESS EASEMENT
- LME = LAKE MAINTENANCE EASEMENT
- LB = LICENSED BUSINESS
- N = NORTHING
- NT = NON-TANGENT
- ORB = OFFICIAL RECORDS BOOK
- PBA = PALM BEACH AGGREGATES, LLC
- PDE = PUBLIC DRAINAGE EASEMENT
- PG. = PAGE
- PC = POINT OF CURVATURE
- PBCR = PALM BEACH COUNTY RECORDS
- POB = POINT OF BEGINNING
- POC = POINT OF COMMENCEMENT
- PB = PLAT BOOK
- PRM = PERMANENT REFERENCE MONUMENT
- R = RADIUS
- RAW = RIGHT-OF-WAY
- SFWMD = SOUTH FLORIDA WATER MANAGEMENT DISTRICT
- UE = UTILITY EASEMENT
- = SET 5/8" IRON ROD & ALUMINUM CAP STAMPED "LB 7055 PRM"



STATE PLANE COORDINATES:
 A. HORIZONTAL DATUM = NORTH AMERICAN DATUM 1983 (1990 ADJUSTMENT)
 B. ZONE = FLORIDA EAST
 C. PROJECTION = TRANSVERSE MERCATOR
 D. COORDINATES = GRID
 E. LINEAR UNITS = US SURVEY FEET
 F. ALL DISTANCES ARE GROUND UNLESS OTHERWISE SHOWN
 G. SCALE FACTOR = 0.99998948
 H. GRID DISTANCE = GROUND DISTANCE X SCALE FACTOR
 I. ROTATION EQUATION: NONE

SHEET 3 OF 4

THIS INSTRUMENT WAS
PREPARED BY JIM SULLIVAN

2035 Vista Parkway, West Palm Beach, FL 33411
 Phone No. 866.909.2220 www.wginc.com
 Cert No. 6091 - LB No. 7055